

GLOBAL OVERVIEW | SELECTED INDICES

SOUTH AFRICAN INDICES	CLOSE	PREVIOUS	1D%	5D%	1M%	YTD%
All Share	76090,5	75679,6	0,54	1,60	2,91	3,23
Top 40	69526,8	69197,6	0,48	1,68	3,38	3,69
Financial 15	15802,2	15511,7	1,87	2,51	3,21	6,78
Industrial 25	93254,7	93753,9	-0,53	-1,61	-0,52	-2,31
Resource 10	77790,8	76924,4	1,13	5,20	7,95	9,61
Mid Cap	80457,0	79384,0	1,35	0,94	0,12	0,95
Small Cap	67844,0	67507,8	0,50	1,38	0,14	0,50
Banks	9559,7	9389,5	1,81	3,52	3,72	8,35
General Retailers	6974,1	7054,7	-1,14	-0,81	-9,04	-7,30
Property (J253) - TR	1618,7	1608,0	0,66	-0,88	-4,45	-3,86

AMERICAN INDICES	CLOSE	PREVIOUS	1D%	5D%	1M%	YTD%
Dow Jones	35462,8	35091,1	1,06	0,16	-2,12	-2,41
Nasdaq	14194,5	14015,7	1,28	-1,06	-4,96	-9,27
S&P 500	4521,5	4483,9	0,84	-0,55	-3,32	-5,13
Dollar Index	95,5	95,4	0,09	-0,79	-0,25	-0,19
US VIX	21,4	22,9	-6,21	-2,37	14,29	24,51

EUROPEAN INDICES	CLOSE	PREVIOUS	1D%	5D%	1M%	YTD%
CAC 40	7028,4	7009,3	0,27	-1,00	-2,65	-1,74
DAX 30	15242,4	15206,6	0,24	-2,41	-4,42	-4,04
Eurostoxx 50	4141,6	4120,6	0,51	-1,96	-3,75	-3,65
FTSE	7567,1	7573,5	-0,08	0,42	1,09	2,47

ASIAN INDICES	CLOSE	PREVIOUS	1D%	5D%	1M%	YTD%
Hang Seng	24329,5	24579,6	-1,02	2,22	3,56	3,98
Nikkei 225	27284,5	27248,9	0,13	0,76	-4,19	-5,23
Shanghai	3452,6	3429,6	0,67	2,71	-3,55	-5,14

EARLY MORNING	LAST	CLOSE	% CHG	1D%	5D%	YTD%
Tencent	480,4	470,0	2,21	-1,67	-0,25	2,62
BHP Billiton	4822,0	4915,0	-1,89	3,71	9,39	18,43

INTERNATIONAL ECONOMIC CALENDAR | SELECTED EVENTS

TIME	AREA	TODAY'S EVENTS & RELEASES	PERIOD	EXP.	PREV.
9:00	EUR	German Trade Balance	Dec	11.3B	10.9B
11:30	RSA	SACCI Business Confidence	Dec	94	---
11:30	RSA	SACCI Business Confidence	Jan	91	92.8
17:00	USD	Final Wholesale Inventories m/m	Dec	2.1%	2.1%
17:30	USD	Crude Oil Inventories	---	1.5M	-1.0M

TIME	AREA	PREVIOUS SESSION'S RELEASES	PERIOD	EXP.	ACT.
9:45	EUR	French Trade Balance	Dec	-9.1B	-11.3B
11:00	EUR	Italian Retail Sales m/m	Dec	-0.4%	0.9%
13:00	USD	NFIB Small Business Index	Jan	97.4	97.1
15:30	USD	Trade Balance	Dec	-83.0B	-80.7B
17:00	USD	IBD/TIPP Economic Optimism	Feb	47.2	44.0

LOCAL EQUITIES | JSE ALL SHARE COMPANIES

BEST ONE-DAY % PERFORMERS	CODE	CLOSE	1D%	5D%	YTD%
Tsogo Sun Hotels	TGO	350	6,06	2,94	-0,57
Cashbuild	CSB	29753	5,16	6,58	14,00
Tsogo Sun Gaming	TSG	1167	4,48	3,92	0,17
Fortress REIT B	FFB	367	3,97	-2,13	12,92
Liberty Two Degrees	L2D	479	3,90	-0,42	0,84
Famous Brands	FBR	7360	3,81	1,66	-5,83
Sappi	SAP	4525	3,78	3,67	-0,90

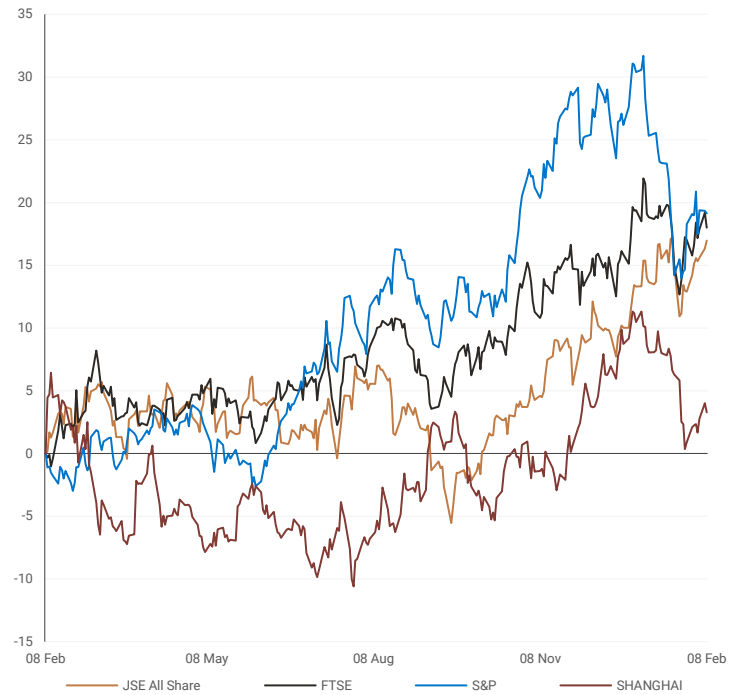
WORST ONE-DAY % PERFORMERS	CODE	CLOSE	1D%	5D%	YTD%
Curro	COH	1250	-6,16	-10,01	0,40
Sun International	SUI	2625	-4,09	-5,10	-7,73
Allied Electronics Corp A	AEL	841	-3,11	1,69	-8,09
Murray & Roberts	MUR	1364	-2,57	-2,22	-4,41
African Rainbow Cap	AIL	635	-2,31	-4,80	-6,62
Santam	SNT	27638	-1,92	2,07	2,74
City Lodge Hotels	CLH	530	-1,85	-2,75	-2,03

DIVIDEND DATA | SELECTED JSE ALL SHARE COMPANIES

COMPANY	CODE	DIVIDEND
Kaap Agri	KAL	111 ZARc

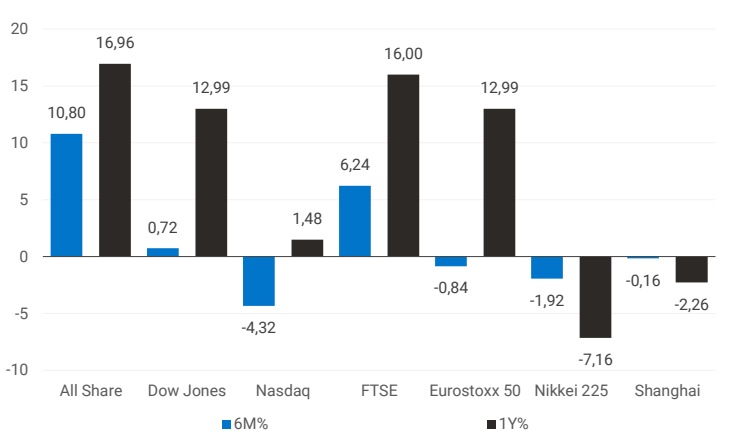
INTERNATIONAL INDICES

normalised percentage performances (in rand terms)



INTERNATIONAL INDICES

6-month & 1-year percentage performances



JSE ALL SHARE INDEX

2021 v 2022



Ex div 09 Feb

COMPANY	CODE	DIVIDEND	COMPANY	CODE	DIVIDEND
Kaap Agri	KAL	111 ZARc			

COMPANY	CLOSE	PREVIOUS	1D%	5D%	1M%	YTD%
Absa Group	17450	17123	1,91	3,16	5,76	14,39
Anglo	72523	71430	1,53	6,11	5,66	11,28
Angloplat	185710	185500	0,11	0,80	1,23	2,22
Anglo Gold Ashanti	30414	29387	3,49	4,14	2,65	-7,47
Anheuser-Busch Inbev	95326	94921	0,43	-2,38	-2,33	-0,98
Bhp Group Plc	52730	52440	0,55	7,97	8,59	11,15
Bid Corp	33665	33889	-0,66	1,46	1,52	3,13
British American Tobacco Plc	67700	66460	1,87	3,34	13,90	15,55
Compagnie Financiere	21650	22045	-1,79	-4,09	-7,59	-10,30
Capitec	209364	206000	1,63	1,39	-1,74	2,64
Discovery	15944	15700	1,55	2,29	7,75	11,05
Firstrand	6432	6256	2,81	3,69	2,21	5,79
Goldfields	16886	16300	3,60	3,27	7,19	-3,03
Glencore Plc	8620	8553	0,78	6,74	2,95	6,22
Implats	22957	22766	0,84	1,07	4,31	2,03
Kumba Iron Ore	61546	60000	2,58	14,45	32,93	33,77
Mondi Plc	38729	38943	-0,55	0,04	-2,26	-1,99
Mtn Group	18813	18705	0,58	-1,91	12,59	10,20
Naspers -N	244663	247610	-1,19	-2,49	2,41	-1,03
Prosus Nv	124280	126540	-1,79	-2,17	-1,52	-5,11
Stanbank	15529	15406	0,80	3,53	6,08	10,91
Shoprite	22420	22000	1,91	7,72	7,23	7,33
Sanlam	6349	6211	2,22	0,84	5,34	6,96
Sasol	34210	34343	-0,39	-2,99	30,82	32,08
Sibanye Stillwater	5878	5785	1,61	2,94	18,08	19,71
Vodacom Group	14512	14753	-1,63	0,10	9,60	7,80

SELECTED HEADLINES

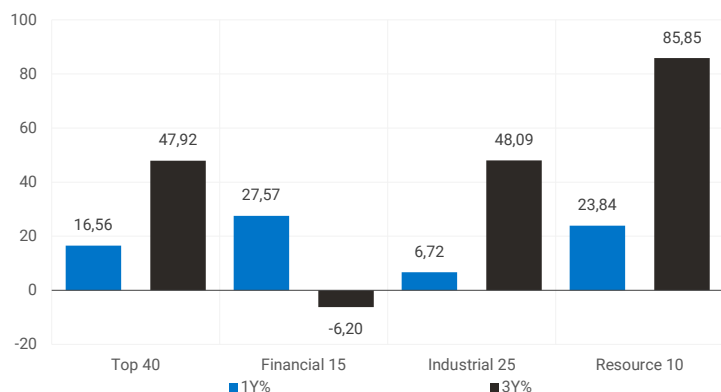
The Johannesburg Stock Exchange's Top-40 Index closed 0.48% higher at 69,527 points yesterday, while the broader All-Share Index rose 0.54% to 76,091 points. Financial firms, which tend to benefit when the rand is stronger, were among the biggest winners of the day, with insurer Old Mutual topping the blue-chip index with a 3.6% rise. In other news, state-owned utility Eskom suspended scheduled power cuts on Tuesday, which were implemented after it suffered more breakdowns at its ailing coal fleet.

JSE TOP 40 INDEX last 100 days



LOCAL INDICES

1-year & 3-year percentage performances



EXPECTED COMPANY REPORTING SCHEDULE

COMPANY	CODE	RELEASE	DATE
Net 1 UEPS Technologies	NT1	Interim	09 Feb
ArcelorMittal	ACL	Final	10 Feb
Italtile	ITE	Interim	10 Feb
Steinhoff	SNH	Final	11 Feb
Sappi	SAP	Quarterly	11 Feb

BANK & OTHER SELECTED PREFERENCE SHARES

COMPANY	CODE	CLOSE	CLEAN YIELD	APPROX. NXT. LDT
Investec Limited	INPR	8950	7,18	08 Jun
Standard Bank	SBPP	9100	6,98	06 Apr
Firstrand Bank	FSRP	8950	6,76	16 Feb
Absa	ABSP	85000	7,05	13 Apr
Capitec	CPIP	11000	5,82	16 Mar
Grindrod	GNDP	8495	8,71	23 Mar
Netcare	NTCP	8749	7,23	04 May
Discovery	DSBP	9603	8,36	09 Mar
Invicta	IVTP	8750	9,06	22 Jun

SENS ANNOUNCEMENTS

SELECTED RELEASES

SASOL LIMITED – Trading Statement

Sasol is expected to deliver a mixed set of results for the six months ended 31 December 2021 (2022 financial half year). Improved Brent crude oil price, refining margins and chemical prices resulted in a notable gross margin improvement from the prior half year, combined with strong cost and capital expenditure performance. These benefits were partly offset by operational challenges in our South African value chains which resulted in lower production, as reported in our Business Performance Metrics SENS announcement on 25 January 2022. Sasol's adjusted earnings before interest, tax, depreciation and amortisation (adjusted EBITDA\*\*) for the six months ended 31 December 2021 is expected to increase by between 66% and 76% from R18,6 billion in the prior half year, to between R30,9 billion and R32,7 billion. This is due to a strong recovery in Brent crude oil and chemical prices, partly offset by lower sales volumes for chemicals and energy. Earnings per share (EPS) are expected to be between R22,81 and R25,15 compared to the prior half year earnings per share of R23,41 (representing a change of between (3%) and 7%); Headline earnings per share (HEPS) are expected to be between R14,25 and R16,17 compared to the prior half year headline earnings per share of R19,16 (representing a decrease by between 16% and 26%). Core HEPS (CHEPS\*) are expected to be between R22,13 and R22,91 compared to the prior half year CHEPS of R7,86. Unrealised losses of R4,9 billion on the translation of monetary assets and liabilities and valuation of financial instruments and derivative contracts. Remeasurement items net gain of R5,8 billion, mainly due to a gain of R4,9 billion on the realisation of the foreign currency translation reserve (FCTR) on the divestment of Sasol Canada's shale gas assets and a R1,4 billion reversal of impairment on the Chemicals Work Up & Heavy Alcohols value chain due to a higher price outlook on the back of a sustained increase in demand for alcohols into the personal hygiene market during and post the COVID-19 pandemic.

Move | -0.39% Open | 34250c Close | 34210c High | 34688c Low | 33651c

RCL FOODS LIMITED – Trading statement

In accordance with the JSE Limited Listings Requirements, shareholders are advised that RCL FOODS expects its headline earnings per share ("HEPS") for the six-month period ended December 2021 ("current period") to be between 69.0 cents (+15.6%) and 76.0 cents (+27.3%) when compared to the reported HEPS of 59.7 cents for the six-month period ended December 2020 ("comparative period"). Earnings per share ("EPS") for the current period is expected to be between 70.0 cents (+13.6%) and 77.0 cents (+25.0%) when compared to the reported EPS of 61.6 cents for the comparative period. The expected improvement over the comparative period is due to pleasing performances from all divisions and is also a function of the base effect of the higher direct costs associated with COVID-19 in the comparative period. The Group's financial results for the current period are expected to be released on SENS on 28 February 2022.

Move | 11.51% Open | 1415c Close | 1569c High | 1600c Low | 1415c

## LOCAL EQUITIES | JSE MID CAP COMPANIES

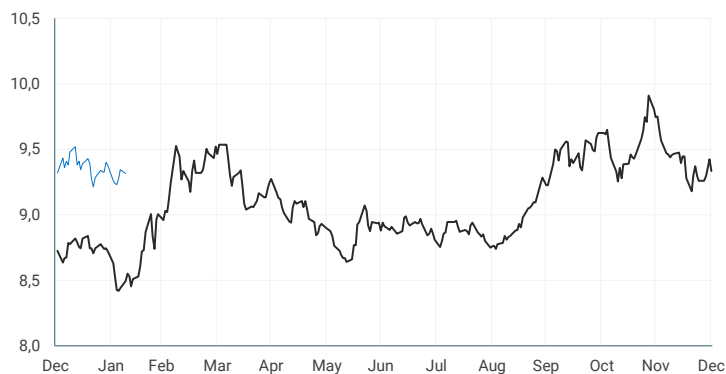
COMPANY	CODE	CLOSE	PREVIOUS	1D%	1M%	YTD%
Aspen	APN	20700	20300	1,97	-7,42	-7,77
African Rainbow	ARI	23332	23080	1,09	-2,03	0,91
Avi	AVI	7344	7246	1,35	-4,85	-0,62
Barworld	BAW	13770	13800	-0,22	0,34	-8,43
Bidvest Group	BVT	19066	19002	0,34	0,56	0,64
Capco	CCO	3489	3520	-0,88	-3,00	-3,70
Clicks Group	CLS	29271	29382	-0,38	-6,33	-7,23
Coronation	CML	5093	5055	0,75	-6,98	-3,06
Dis-Chem	DCP	3764	3751	0,35	9,04	6,27
Distell Group	DGH	17055	17050	0,03	0,32	1,04
Drdgold	DRD	1241	1212	2,39	-3,12	-5,98
Exxaro Resources	EXX	17894	17700	1,10	10,68	17,05
Fortress Reit A	FFA	1264	1258	0,48	-1,33	1,12
Fortress Reit B	FFB	367	353	3,97	1,94	12,92
Growthpoint	GRT	1386	1392	-0,43	-8,39	-9,82
Harmony Gold	HAR	5703	5616	1,55	2,59	-14,37
Investec	INL	9503	9415	0,93	7,15	8,54
Investec	INP	9575	9540	0,37	8,16	10,45
Italtile	ITE	1605	1583	1,39	-3,72	-4,46
Libhold	LBH	10213	10187	0,26	4,28	8,03
Life Healthcare	LHC	2360	2327	1,42	2,97	-1,79
Multichoice Group	MCG	12525	12280	2,00	4,30	2,64
Mediclinic Int.	MEI	7100	7100	0,00	2,90	4,32
Montauk Renewables	MKR	15370	15300	0,46	-2,52	-10,64
Mr Price Group	MRP	20709	20309	1,97	4,43	3,80
Momentum	MTM	2012	1956	2,86	2,29	6,17
Ninety One Plc	N91	5411	5384	0,50	-2,49	-5,86
Nedbank	NED	20159	19735	2,15	8,97	15,18
Northam Platinum	NHM	20562	20200	1,79	-4,79	-1,85
Nepi Rockcastle Plc	NRP	10298	10262	0,35	-3,76	-2,85
Netcare	NTC	1498	1487	0,74	-7,76	-5,67
Ninety One	NY1	5392	5294	1,85	-2,67	-4,58
Old Mutual	OMU	1433	1383	3,62	5,52	9,39
Pik N Pay	PIK	4899	4875	0,49	-7,50	-6,63
Pepkor	PPH	2250	2190	2,74	-1,75	2,79
Psg	PSG	8755	8764	-0,10	-5,34	-1,89
Quilter Plc	QLT	2957	2885	2,50	-8,11	-6,66
Rbplapts	RBP	15852	15817	0,22	-2,23	1,41
Redefine	RDF	404	402	0,50	-8,18	-8,18
Remgro	REM	13553	13130	3,22	3,01	3,34
Resilient Reit	RES	5963	5991	-0,47	-2,07	-0,20
Rand Merchant Inv	RMI	4848	4775	1,53	7,09	7,33
Reinet Investments Sca	RNI	30949	30270	2,24	3,29	8,20
Sappi	SAP	4525	4360	3,78	0,09	-0,90
Santam	SNT	27638	28180	-1,92	0,67	2,74
Spar	SPP	16714	16497	1,32	-0,55	0,01
Sirius Real Estate	SRE	2670	2641	1,10	-10,19	-11,97
Tigebrands	TBS	17700	17500	1,14	-2,21	-2,21
The Foschini Group	TFG	13284	12897	3,00	5,98	7,22
Thungela Resources	TGA	10393	10560	-1,58	20,79	22,94
Telkom	TKG	4600	4675	-1,60	-11,69	-14,94
Truworths	TRU	5745	5588	2,81	5,28	9,95
Textainer	TXT	59002	57501	2,61	-0,98	2,61
Woolies	WHL	5279	5193	1,66	0,94	1,79

## LOCAL EQUITIES | JSE SMALL CAP COMPANIES

COMPANY	CODE	CLOSE	PREVIOUS	1D%	1M%	YTD%
Advtech	ADH	1588	1577	0,70	-12,02	-9,67
Altron	AEL	841	868	-3,11	-11,75	-8,09
Aeci	AFE	11812	11724	0,75	7,73	5,46
Alexander Forbes	AFH	422	410	2,93	-5,17	-6,01
Afrimat	AFT	6370	6320	0,79	11,87	10,92
Arrowhead Prop.	AHB	341	341	0,00	-16,63	-19,76
African Rainbow Cap.	AIL	635	650	-2,31	-15,33	-6,62
Adcock Ingram	AIP	5000	5000	0,00	-2,91	-0,89
Astral	ARL	18947	18790	0,84	11,25	9,74
Attacq	ATT	750	726	3,31	-3,23	-6,13
Brait	BAT	493	498	-1,00	4,67	9,07
Blue Label Telecoms	BLU	497	497	0,00	-7,96	-2,36
Bytes Technology	BYI	9399	9401	-0,02	-18,10	-22,99
City Lodge Hotels	CLH	530	540	-1,85	-4,50	-2,03
Curro	COH	1250	1332	-6,16	0,97	0,40
Cashbuild	CSB	29753	28292	5,16	11,61	14,00
Datatec	DTC	3772	3772	0,00	1,15	-2,03
Emira	EMI	1043	1031	1,16	8,08	9,79
Epp N.V	EPP	1079	1060	1,79	-12,28	-8,17
Equites Property Fund	EQU	2098	2040	2,84	-10,84	-8,74
Famous Brands	FBR	7360	7090	3,81	-4,72	-5,83
Grindrod	GND	505	511	-1,17	4,99	2,02
Hci	HCI	7595	7595	0,00	4,04	2,64
Hudaco	HDC	15701	15507	1,25	21,71	19,08
Hammerson Plc	HMN	795	802	-0,87	7,29	10,57
Hyprop	HYP	3728	3725	0,08	-1,11	0,08
Investec Australia Prop.	IAP	2010	1950	3,08	6,24	4,58
Investec Prop Fund	IPF	1229	1200	2,42	-1,92	-0,89
Imperial	IPL	6450	6460	-0,15	-0,28	0,80
Jse	JSE	11802	11734	0,58	6,50	5,38
Kap Industrial	KAP	466	465	0,22	8,37	6,64
Karooooo	KRO	53001	55000	-3,63	-2,29	-0,93
Psg Konsult	KST	1425	1440	-1,04	4,78	6,03
Liberty Two Degrees	L2D	479	461	3,90	0,42	0,84
Long4Life	L4L	582	578	0,69	0,52	-0,34
Libstar	LBR	625	632	-1,11	-6,58	-6,02
Lighthouse Capital	LTE	925	919	0,65	2,21	2,78
Massmart	MSM	5583	5684	-1,78	-7,73	-7,99
Mas Real Estate Inc	MSP	2179	2170	0,41	0,88	3,61
Metair	MTA	2900	2830	2,47	5,84	5,45
Motus	MTH	11385	11400	-0,13	3,73	3,42
M&R Hold	MUR	1364	1400	-2,57	-2,22	-4,41
Oceana	OCE	5650	5661	-0,19	1,73	1,73
Omnia	OMN	5888	5918	-0,51	-6,39	-8,01
Pan African Resource	PAN	394	400	-1,50	5,63	2,60
Raubex	RBX	4031	3971	1,51	3,95	1,28
Rhodes Food Pty	RFG	1300	1288	0,93	5,69	5,86
Reunert	RLO	4840	4805	0,73	-5,71	-8,68
Sa Corp Real Estate	SAC	236	230	2,61	0,85	0,43
Steinhoff International N.V.	SNH	464	459	1,09	-7,20	-7,57
Super	SPG	3486	3400	2,53	2,59	2,50
Stor-Age Property Reit	SSS	1462	1471	-0,61	-1,22	0,48
Stenprop	STP	4100	4064	0,89	-5,75	-4,65
Sun Int	SUI	2625	2737	-4,09	-7,89	-7,73
Transaction Capital	TCP	4414	4330	1,94	-10,07	-1,98
Tsogo Sun Hotels	TGO	350	330	6,06	5,74	-0,57
Tsogo Sun Gaming	TSG	1167	1117	4,48	6,38	0,17
Vukile	VKE	1225	1212	1,07	-1,76	-0,97
Wbhovco	WBO	11443	11489	-0,40	0,25	1,02
Zeder Investments	ZED	338	335	0,90	2,42	4,32

### SOUTH AFRICAN 10-YEAR BOND

2021 v 2022



### 10-YEAR BOND YIELDS | SELECTED ITEMS (BASIS POINT CHANGE)

REGION	YIELD	1D%	1M%	YTD%
United States	1,95	3	18	77
United Kingdom	1,49	8	31	101
Germany	0,26	4	31	71
Japan	0,21	2	8	15
South African 10Y	9,34	-4	-16	74

### GLOBAL INTEREST RATES | SELECTED ITEMS

REGION	CURRENT RATE
United States	0,00%-0,25%
United Kingdom	0,50%
European	0,00%
SA Repo Rate	4,00%
SA Prime Rate	7,50%

## GLOBAL MARKETS

### EUROPEAN INDICES

normalised percentage performances



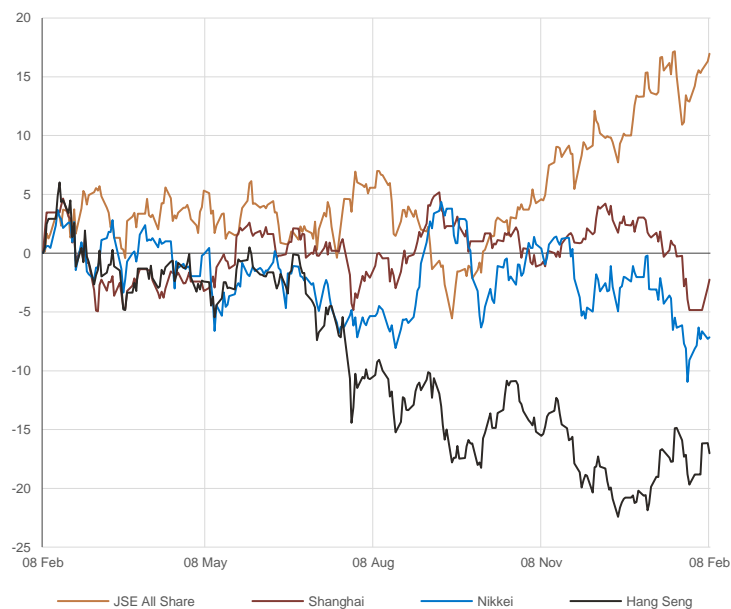
### AMERICAN INDICES

normalised percentage performances



### ASIAN INDICES

normalised percentage performances



## EUROPEAN MARKET COMMENTARY

### SELECTED HEADLINES

European stocks closed mixed on Tuesday, with global investors monitoring earnings and anticipating key U.S. inflation data due to be released later in the week. The pan-European Stoxx 600 index provisionally closed a hair above the flatline, with tech stocks sliding 0.9% while basic resources added 2.2%. In earnings news, oil and gas giant BP reported a massive upswing in full-year net profit, its highest in eight years, supported by soaring commodity prices.

EUROPEAN INDICES	CLOSE	PREVIOUS	1D%	5D%	1M%	YTD%
CAC 40	7028,4	7009,3	0,27	-1,00	-2,65	-1,74
DAX 30	15242,4	15206,6	0,24	-2,41	-4,42	-4,04
Eurostoxx 50	4141,6	4120,6	0,51	-1,96	-3,75	-3,65
FTSE	7567,1	7573,5	-0,08	0,42	1,09	2,47

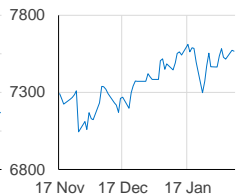
### CAC 40



### DAX



### FTSE



## AMERICAN MARKET COMMENTARY

### SELECTED HEADLINES

U.S. stocks rose on Tuesday as investors digested another batch of corporate earnings and awaited key inflation data later this week. Harley-Davidson jumped more than 15% after the company reported a surprise profit for the fourth quarter. Treasury yields hit fresh pandemic-era highs Monday and rose again Tuesday. At its highest, the benchmark 10-year Treasury note yielded 1.97% on Tuesday, a level not seen since November 2019.

AMERICAN INDICES	CLOSE	PREVIOUS	1D%	5D%	1M%	YTD%
Dow Jones	35462,8	35091,1	1,06	0,16	-2,12	-2,41
Nasdaq	14194,5	14015,7	1,28	-1,06	-4,96	-9,27
S&P 500	4521,5	4483,9	0,84	-0,55	-3,32	-5,13

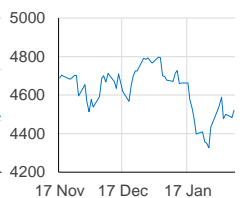
### DOW JONES



### NASDAQ



### S&P 500



## ASIAN MARKET COMMENTARY

### SELECTED HEADLINES

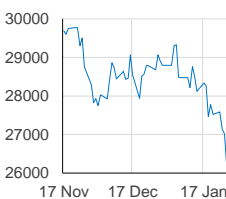
Shares in Asia-Pacific rose this morning, with stocks in Hong Kong leading gains regionally. The Hang Seng index in Hong Kong soared around 2% as Chinese tech stocks bounced back from their Tuesday losses. Shares of Alibaba jumped 6.12% while Tencent gained 2.09% and Netease advanced 5.59%. Elsewhere, the S&P/ASX 200 in Australia climbed 0.34% as bank stocks jumped.

ASIAN INDICES	CLOSE	PREVIOUS	1D%	5D%	1M%	YTD%
Hang Seng	24329,5	24579,6	-1,02	2,22	3,56	3,98
Nikkei 225	27284,5	27248,9	0,13	0,76	-4,19	-5,23
Shanghai	3452,6	3429,6	0,67	2,71	-3,55	-5,14

### HANG SENG



### NIKKEI



### SHANGHAI



## COMMODITIES

### BRENT CRUDE (\$)

last 100 days



### PLATINUM (\$)

last 100 days



## COMMODITY MARKET COMMENTARY

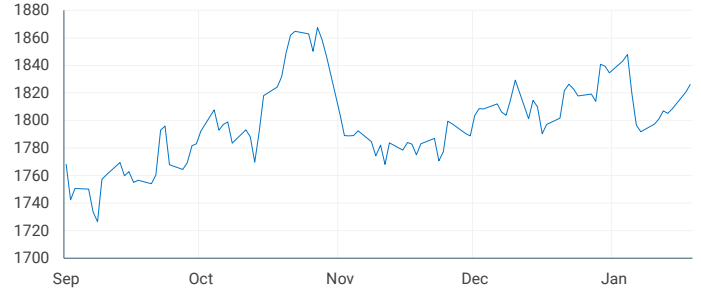
### SELECTED HEADLINES

Gold prices were steady earlier today near a two-week high scaled in the previous session, as inflationary risks and Russia-Ukraine tensions underpinned the safe-haven metal, despite the prospect of an aggressive rate hike by the U.S. central bank. Oil prices nudged up this morning following two sessions of losses after industry data showed an unexpected drop in U.S. crude and fuel stocks, offsetting concerns of a possible rise in supplies from Iran.

COMMODITY	LAST	CLOSE	% CHG	1D%	1M%	YTD%
Brent Crude (\$)	91,2	91,0	0,24	-0,41	11,26	16,73
Gold (\$)	1827,9	1826,1	0,10	0,30	1,62	-0,17
Palladium	2250,5	2248,8	0,07	-0,86	16,13	18,53
Platinum (\$)	1035,9	1035,4	0,05	1,11	7,68	6,85
Silver	23,3	23,2	0,51	0,79	3,76	-0,51

### GOLD (\$)

last 100 days



## CURRENCIES

COMMODITY	LAST	CLOSE	% CHG	1D%	1M%	YTD%
USDZAR	15,34	15,35	-0,12	-1,01	-1,68	-3,69
GBPZAR	20,79	20,79	0,00	-0,92	-1,79	-3,55
EURZAR	17,52	17,52	-0,02	-1,23	-0,96	-3,36
AUDZAR	10,99	10,97	0,17	-0,72	-1,91	-5,35
EURUSD	1,14	1,14	0,07	-0,21	0,50	0,40
USDJPY	115,44	115,54	-0,09	0,39	0,00	0,38
GBPUSD	1,36	1,35	0,11	0,07	-0,34	0,13
USDCHF	0,92	0,92	0,03	0,09	0,60	1,32
AUDCAD	0,91	0,91	0,11	0,66	0,06	-1,06

### SELECTED HEADLINES

The rand firmed in afternoon trade on Tuesday as power utility Eskom suspended its latest power cuts, with market focus also fixed on U.S. inflation data due later in the week that could unleash bets on faster interest rate hikes there. At the close of the session, the rand was 1.01% firmer as it traded around R15.35 to the dollar. Locally, attention will soon shift to President Cyril Ramaphosa's annual State of the Nation Address in parliament on Thursday, a speech he typically uses to announce reforms in key policy areas.

### USDZAR

last 100 days



### CURRENCY PAIRS

normalised percentage performances



### EURUSD

last 100 days

