

GLOBAL OVERVIEW | SELECTED INDICES

SOUTH AFRICAN INDICES	CLOSE	PREVIOUS	1D%	5D%	1M%	YTD%
All Share	75206,0	75021,7	0,25	2,38	0,21	2,03
Top 40	68678,9	68461,2	0,32	2,47	0,41	2,43
Financial 15	15479,6	15582,7	-0,66	1,72	2,10	4,60
Industrial 25	93596,9	93896,3	-0,32	2,86	-3,69	-1,95
Resource 10	75692,6	74594,3	1,47	2,18	4,56	6,65
Mid Cap	79281,6	79721,1	-0,55	1,26	-2,05	-0,53
Small Cap	67618,4	67527,1	0,14	2,45	0,81	0,16
Banks	9327,4	9377,2	-0,53	1,86	3,18	5,72
General Retailers	7194,9	7181,8	0,18	-0,56	-2,05	-4,36
Property (J253) - TR	1641,0	1641,0	0,00	1,37	-2,91	-2,54

AMERICAN INDICES	CLOSE	PREVIOUS	1D%	5D%	1M%	YTD%
Dow Jones	35089,7	35111,2	-0,06	1,05	-4,65	-3,44
Nasdaq	14098,0	13878,8	1,58	2,38	-9,76	-9,89
S&P 500	4500,5	4477,4	0,52	1,55	-6,11	-5,57
Dollar Index	95,5	95,3	0,13	-1,81	-0,85	-0,23
US VIX	23,2	24,4	-4,64	-16,05	37,32	34,84

EUROPEAN INDICES	CLOSE	PREVIOUS	1D%	5D%	1M%	YTD%
CAC 40	6951,4	7005,6	-0,77	-0,21	-5,00	-2,82
DAX 30	15099,6	15368,5	-1,75	-1,43	-6,52	-4,94
Eurostoxx 50	4126,3	4141,0	-0,36	-1,05	-4,00	-4,00
FTSE	7516,4	7528,8	-0,17	0,67	0,15	1,79

ASIAN INDICES	CLOSE	PREVIOUS	1D%	5D%	1M%	YTD%
Hang Seng	24573,3	23802,3	3,24	4,34	5,51	5,02
Nikkei 225	27440,0	27241,3	0,73	2,70	-6,35	-4,69
Shanghai	3361,4	3361,4	0,00	0,00	-7,46	-7,65

EARLY MORNING	LAST	CLOSE	% CHG	1D%	5D%	YTD%
Tencent	472,6	479,0	-1,34	1,66	4,13	4,59
BHP Billiton	4734,0	4681,0	1,13	-0,51	-0,23	12,80

INTERNATIONAL ECONOMIC CALENDAR | SELECTED EVENTS

TIME	AREA	TODAY'S EVENTS & RELEASES	PERIOD	EXP.	PREV.
8:00	RSA	Foreign Exchange Reserves	Jan	%58B	\$57.6B
9:00	EUR	German Industrial Production m/m	Dec	0.4%	-0.2%
11:30	EUR	Sentix Investor Confidence	Feb	15.1	14.9
17:45	EUR	ECB President Lagarde Speaks	---	---	---
22:00	USD	Consumer Credit m/m	Dec	24.9B	40.0B

TIME	AREA	PREVIOUS SESSION'S RELEASES	PERIOD	EXP.	ACT.
9:00	EUR	German Factory Orders m/m	Jan	0.4%	2.8%
11:30	GBP	Construction PMI	Jan	54.3	56.3
12:00	EUR	Retail Sales m/m	Jan	-1.0%	-3.0%
15:30	USD	Non-Farm Employment Change	---	110K	467K
15:30	USD	Unemployment Rate	Jan	3.9%	4.0%

LOCAL EQUITIES | JSE ALL SHARE COMPANIES

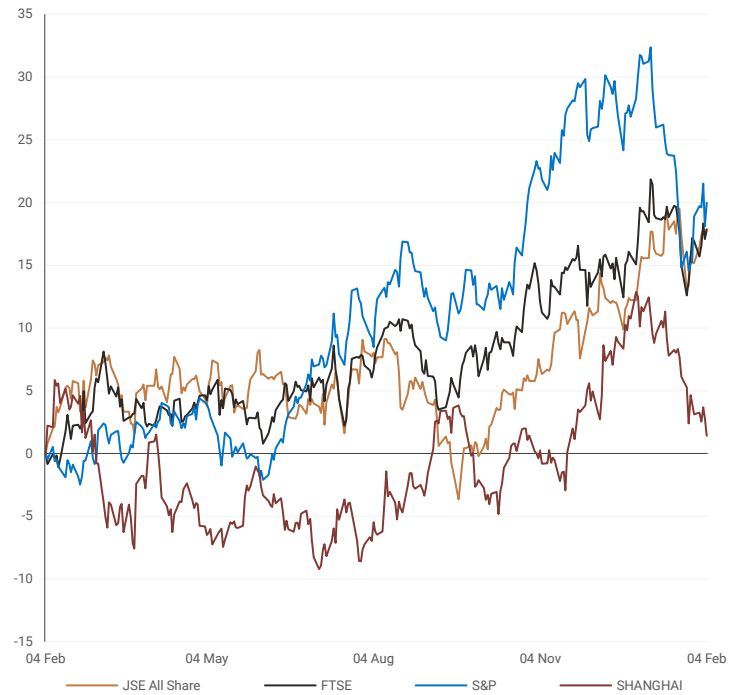
BEST ONE-DAY % PERFORMERS	CODE	CLOSE	1D%	5D%	YTD%
PSG Konsult	KST	1500	6,76	7,14	11,61
Kumba Iron Ore	KIO	60066	5,84	11,64	30,55
Liberty Two Degrees	L2D	494	4,00	0,82	4,00
Attacq	ATT	762	3,81	-3,05	-4,63
Astral Foods	ARL	18414	3,45	10,81	6,66
Northam Platinum	NHM	20200	3,08	2,28	-3,58
Sasol	SOL	35028	2,88	2,15	35,24

WORST ONE-DAY % PERFORMERS	CODE	CLOSE	1D%	5D%	YTD%
Transaction Capital	TCP	4339	-5,05	0,07	-3,64
Bytes Technology	BYI	9371	-4,18	1,04	-23,22
Fortress REIT B	FFB	360	-4,00	0,00	10,77
Famous Brands	FBR	7112	-3,01	2,70	-9,01
City Lodge Hotels	CLH	550	-2,83	5,57	1,66
Grindrod	GND	500	-2,72	6,84	1,01
Coronation Fund Mngrs Ld	CML	4985	-2,67	-1,33	-5,12

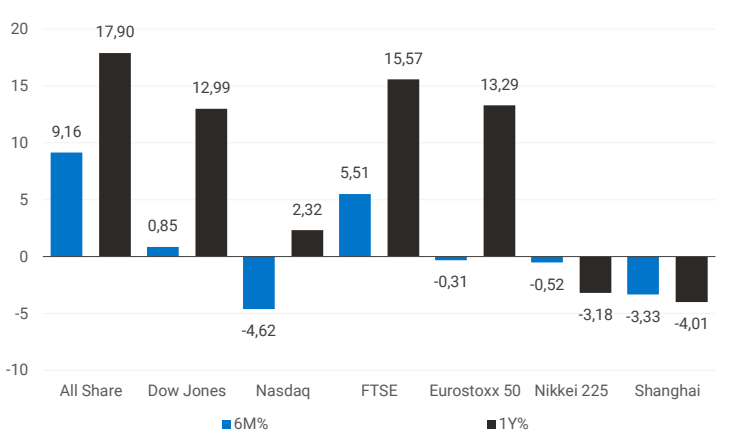
DIVIDEND DATA | SELECTED JSE ALL SHARE COMPANIES

COMPANY	CODE	DIVIDEND
Kaap Agri	KAL	111 ZARc

INTERNATIONAL INDICES
normalised percentage performances (in rand terms)



INTERNATIONAL INDICES
6-month & 1-year percentage performances



JSE ALL SHARE INDEX
2021 v 2022



Last date to trade 08 Feb

COMPANY	CLOSE	PREVIOUS	1D%	5D%	1M%	YTD%
Absa Group	16969	16957	0,07	0,80	6,34	11,24
Anglo	69886	69138	1,08	0,79	3,97	7,23
Angloplat	182145	180549	0,88	2,29	-1,97	0,26
Anglo Gold Ashanti	29214	28674	1,88	4,16	-8,73	-11,12
Anheuser-Busch Inbev	94064	94803	-0,78	-3,17	-8,32	-2,29
Bhp Group Plc	51228	50520	1,40	2,46	6,06	7,99
Bid Corp	33951	34193	-0,71	4,79	1,47	4,01
British American Tobacco Plc	67625	66240	2,09	2,15	12,15	15,42
Compagnie Financiere	21955	22370	-1,86	1,32	-10,46	-9,04
Capitec	206098	206578	-0,23	3,49	0,05	1,04
Discovery	15886	16075	-1,18	4,42	8,30	10,65
Firstrand	6223	6288	-1,03	-0,58	1,10	2,35
Goldfields	16132	15967	1,03	4,14	-5,72	-7,36
Glencore Plc	8397	8360	0,44	2,08	-0,38	3,48
Implats	22496	22190	1,38	1,33	-1,72	-0,02
Kumba Iron Ore	60066	56752	5,84	11,64	31,31	30,55
Mondi Plc	38866	38731	0,35	2,09	-3,98	-1,64
Mtn Group	18700	18731	-0,17	7,26	10,13	9,54
Naspers -N	248038	244778	1,33	5,65	-3,58	0,34
Prosus Nv	125626	123999	1,31	4,51	-6,14	-4,08
Stanbank	15375	15552	-1,14	2,97	5,90	9,81
Shoprite	22000	22057	-0,26	4,48	5,99	5,32
Sanlam	6235	6285	-0,80	1,71	2,41	5,04
Sasol	35028	34047	2,88	2,15	32,63	35,24
Sibanye Stillwater	5779	5621	2,81	5,69	12,85	17,70
Vodacom Group	14645	14601	0,30	2,90	8,52	8,79

SELECTED HEADLINES

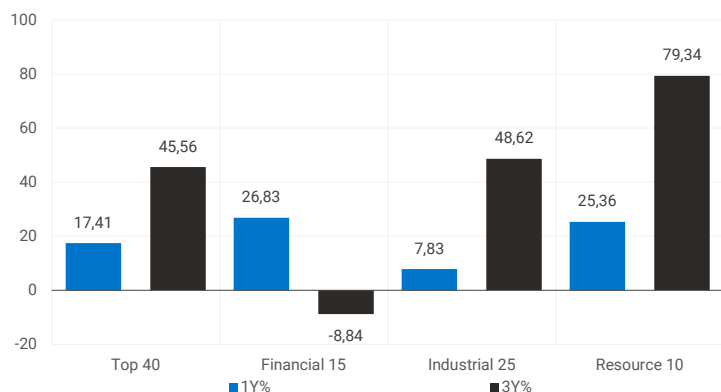
Johannesburg-listed stocks closed slightly higher on Friday, struggling for direction on a typically slow Friday with thin volumes. The All-share index ended up 0.25%, and the Top-40 index up 0.32%. This week, investors will turn their attention to local data releases including December mining and manufacturing figures, as well as a State of the Nation address by President Cyril Ramaphosa on February 10th.

JSE TOP 40 INDEX last 100 days



LOCAL INDICES

1-year & 3-year percentage performances



EXPECTED COMPANY REPORTING SCHEDULE

COMPANY	CODE	RELEASE	DATE
Bowler Metcalf	BCF	Interim	08 Feb
Net 1 UEPS Technologies	NT1	Interim	09 Feb
ArcelorMittal	ACL	Final	10 Feb
Italtile	ITE	Interim	10 Feb
Steinhoff	SNH	Final	11 Feb

BANK & OTHER SELECTED PREFERENCE SHARES

COMPANY	CODE	CLOSE	CLEAN YIELD	APPROX. NXT. LDT
Investec Limited	INPR	9099	7,18	08 Jun
Standard Bank	SBPP	9170	6,98	06 Apr
Firstrand Bank	FSRP	9025	6,76	16 Feb
Absa	ABSP	85500	7,05	13 Apr
Capitec	CPIP	11000	5,82	16 Mar
Grindrod	GNDP	8495	8,71	23 Mar
Netcare	NTCP	8300	7,23	04 May
Discovery	DSBP	9630	8,36	09 Mar
Invicta	IVTP	8680	9,06	22 Jun

SENS ANNOUNCEMENTS

SELECTED RELEASES

Hudaco buys gas products brand Cadac, reports strong results

JSE-listed importer Hudaco Industries, following the reporting of a strong full-year performance for the year ended November 2021, says it has signed agreements to buy well-known braaiing, gas and electronic appliances brand Cadac for about R100 million. Cadac is a South African brand known for its wide range of gas-related products for cooking, heating, lighting and braaiing as well as gas cylinders, stoves and heaters. The group – which imports branded industrial, electronic and electrical products from international and local manufacturers – reported an increase in its final dividend to 520 cents per share, bringing its total dividend for the year to 760 cents, up by 27% on 2019, making this a record distribution for the company. It also saw an increase of 21% in headline earnings per share (Heps) for the period to 1 641 cents against its 2019 full year results, while total turnover rose by 8.3% to R7.25 billion in 2021 when compared to 2019.

Move | 2.72% Open | 14661c Close | 15049c High | 15100c Low | 14661c

INVEST FINANCIAL HOLDINGS LIMITED – Delisting Date

Shareholders are referred to the SENS announcements published on Friday, 21 January 2022 and Tuesday, 25 January 2022, respectively, and hereby confirm that payment of the consideration has made to the Transfer Secretary and eligible shareholders payments will made on Monday, 7 February 2022. The Company will be delisting with effect from Tuesday, 8 February 2022.

Move | 0.00% Open | 184c Close | 184c High | 1884c Low | 184c

*Article excerpts from Moneyweb

LOCAL EQUITIES | JSE MID CAP COMPANIES

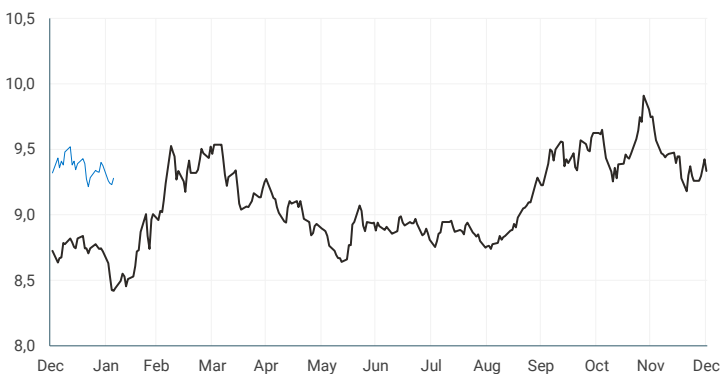
COMPANY	CODE	CLOSE	PREVIOUS	1D%	1M%	YTD%
Aspen	APN	20350	20565	-1,05	-12,84	-9,33
African Rainbow	ARI	23296	22809	2,14	-1,37	0,75
Avi	AVI	7368	7379	-0,15	-1,60	-0,30
Barworld	BAW	13695	13695	0,00	-8,97	-8,92
Bidvest Group	BVT	18761	19084	-1,69	-1,26	-0,97
Capco	CCO	3538	3580	-1,17	-6,00	-2,35
Clicks Group	CLS	29252	29375	-0,42	-8,36	-7,29
Coronation	CML	4985	5122	-2,67	-7,69	-5,12
Dis-Chem	DCP	3763	3704	1,59	7,27	6,24
Distell Group	DGH	17050	17067	-0,10	-0,47	1,01
Drdgold	DRD	1203	1218	-1,23	-8,86	-8,86
Exxaro Resources	EXX	17425	17357	0,39	9,02	13,99
Fortress Reit A	FFA	1280	1290	-0,78	0,47	2,40
Fortress Reit B	FFB	360	375	-4,00	11,11	10,77
Growthpoint	GRT	1400	1436	-2,51	-9,74	-8,91
Harmony Gold	HAR	5570	5425	2,67	-12,96	-16,37
Investec	INL	9178	9093	0,93	1,93	4,83
Investec	INP	9264	9190	0,81	2,35	6,86
Italtile	ITE	1592	1601	-0,56	-6,35	-5,24
Libhold	LBH	9900	10020	-1,20	1,38	4,72
Life Healthcare	LHC	2330	2358	-1,19	-0,81	-3,04
Multichoice Group	MCG	12271	12265	0,05	2,02	0,56
Mediclinic Int.	MEI	6860	6765	1,40	-0,12	0,79
Montauk Renewables	MKR	15071	16001	-5,81	-3,47	-12,38
Mr Price Group	MRP	20084	20027	0,28	-0,15	0,67
Momentum	MTM	2018	2030	-0,59	5,65	6,49
Ninety One Plc	N91	5426	5341	1,59	-8,50	-5,60
Nedbank	NED	19527	19551	-0,12	8,28	11,57
Northam Platinum	NHM	20200	19596	3,08	-5,82	-3,58
Nepi Rockcastle Plc	NRP	10354	10424	-0,67	-3,31	-2,32
Netcare	NTC	1498	1510	-0,79	-6,32	-5,67
Ninety One	NY1	5361	5306	1,04	-7,57	-5,13
Old Mutual	OMU	1396	1386	0,72	2,05	6,56
Pik N Pay	PIK	4909	4999	-1,80	-7,10	-6,44
Pepkor	PPH	2210	2220	-0,45	-1,65	0,96
Psg	PSG	8708	8700	0,09	-4,70	-2,42
Quilter Plc	QLT	2885	2931	-1,57	-12,68	-8,93
Rbplapts	RBP	15786	15695	0,58	-0,84	0,99
Redefine	RDF	402	409	-1,71	-8,84	-8,64
Remgro	REM	13100	13334	-1,75	-1,41	-0,11
Resilient Reit	RES	6059	6088	-0,48	0,97	1,41
Rand Merchant Inv	RMI	4878	4922	-0,89	5,49	7,99
Reinet Investments Sca	RNI	30484	30460	0,08	2,80	6,58
Sappi	SAP	4285	4384	-2,26	-6,85	-6,15
Santam	SNT	28242	28202	0,14	3,37	4,99
Spar	SPP	16576	16764	-1,12	-1,40	-0,81
Sirius Real Estate	SRE	2714	2774	-2,16	-10,87	-10,52
Tigebrands	TBS	18018	18027	-0,05	-0,78	-0,45
The Foschini Group	TFG	12642	12845	-1,58	2,18	2,03
Thungela Resources	TGA	10115	9802	3,19	12,39	19,65
Telkom	TKG	5030	4977	1,06	-4,43	-6,99
Truworths	TRU	5579	5664	-1,50	4,73	6,78
Textainer	TXT	57592	58800	-2,05	-2,80	0,16
Woolies	WHL	5163	5182	-0,37	-1,45	-0,44

LOCAL EQUITIES | JSE SMALL CAP COMPANIES

COMPANY	CODE	CLOSE	PREVIOUS	1D%	1M%	YTD%
Advtech	ADH	1612	1608	0,25	-7,09	-8,30
Altron	AEL	870	850	2,35	-7,45	-4,92
Aeci	AFE	11689	11884	-1,64	6,99	4,37
Alexander Forbes	AFH	419	415	0,96	-2,78	-6,68
Afrimat	AFT	6090	6025	1,08	9,53	6,04
Arrowhead Prop.	AHB	345	350	-1,43	-11,76	-18,82
African Rainbow Cap.	AIL	662	656	0,91	-6,76	-2,65
Adcock Ingram	AIP	4950	4970	-0,40	-2,31	-1,88
Astral	ARL	18414	17800	3,45	9,61	6,66
Attacq	ATT	762	734	3,81	-0,26	-4,63
Brait	BAT	482	485	-0,62	4,78	6,64
Blue Label Telecoms	BLU	502	503	-0,20	-0,20	-1,38
Bytes Technology	BYI	9371	9780	-4,18	-22,32	-23,22
City Lodge Hotels	CLH	550	566	-2,83	-2,83	1,66
Curro	COH	1350	1350	0,00	15,09	8,43
Cashbuild	CSB	28440	28166	0,97	8,84	8,97
Datatec	DTC	3812	3800	0,32	1,65	-0,99
Emira	EMI	1000	1027	-2,63	5,82	5,26
Epp N.V	EPP	1065	1075	-0,93	-9,82	-9,36
Equites Property Fund	EQU	2090	2119	-1,37	-6,95	-9,09
Famous Brands	FBR	7112	7333	-3,01	-7,64	-9,01
Grindrod	GND	500	514	-2,72	4,82	1,01
Hci	HCI	7500	7595	-1,25	2,03	1,35
Hudaco	HDC	15049	14651	2,72	18,03	14,14
Hammerson Plc	HMN	825	810	1,85	15,71	14,74
Hyprop	HYP	3798	3752	1,23	0,13	1,96
Investec Australia Prop.	IAP	1960	1965	-0,25	2,62	1,98
Investec Prop Fund	IPF	1200	1229	-2,36	-0,83	-3,23
Imperial	IPL	6460	6468	-0,12	0,44	0,95
Jse	JSE	11788	11824	-0,30	7,35	5,25
Kap Industrial	KAP	470	480	-2,08	8,29	7,55
Karoo	KRO	55000	53500	2,80	-1,42	2,80
Psg Konsult	KST	1500	1405	6,76	10,29	11,61
Liberty Two Degrees	L2D	494	475	4,00	10,51	4,00
Long4Life	L4L	584	583	0,17	1,57	0,00
Libstar	LBR	640	648	-1,23	-2,44	-3,76
Lighthouse Capital	LTE	950	949	0,11	4,40	5,56
Massmart	MSM	5550	5656	-1,87	-10,87	-8,54
Mas Real Estate Inc	MSP	2175	2153	1,02	1,16	3,42
Metair	MTA	2791	2830	-1,38	5,12	1,49
Motus	MTH	11398	11200	1,77	5,15	3,53
M&R Hold	MUR	1370	1370	0,00	-2,56	-3,99
Oceana	OCE	5835	5850	-0,26	2,78	5,06
Omnia	OMN	6000	6061	-1,01	-5,73	-6,26
Pan African Resource	PAN	390	380	2,63	4,00	1,56
Raubex	RBX	3772	3696	2,06	-3,01	-5,23
Rhodes Food Pty	RFG	1280	1290	-0,78	6,49	4,23
Reunert	RLO	4872	4954	-1,66	-4,09	-8,08
Sa Corp Real Estate	SAC	232	236	-1,69	-0,43	-1,28
Steinhoff International N.V.	SNH	459	449	2,23	-6,13	-8,57
Super	SPG	3450	3511	-1,74	0,38	1,44
Stor-Age Property Reit	SSS	1480	1482	-0,13	1,93	1,72
Stenprop	STP	4100	4149	-1,18	-3,12	-4,65
Sun Int	SUI	2837	2759	2,83	-1,01	-0,28
Transaction Capital	TCP	4339	4570	-5,05	-8,65	-3,64
Tsogo Sun Hotels	TGO	335	330	1,52	-0,89	-4,83
Tsogo Sun Gaming	TSG	1110	1125	-1,33	-2,80	-4,72
Vukile	VKE	1200	1207	-0,58	-3,69	-2,99
Wbhovco	WBO	11138	11375	-2,08	-0,34	-1,68
Zeder Investments	ZED	333	336	-0,89	2,46	2,78

SOUTH AFRICAN 10-YEAR BOND

2021 v 2022



10-YEAR BOND YIELDS | SELECTED ITEMS (BASIS POINT CHANGE)

REGION	YIELD	1D%	1M%	YTD%
United States	1,9	7	18	74
United Kingdom	1,41	4	25	93
Germany	0,2	7	27	65
Japan	0,19	3	8	14
South African 10Y	9,33	10	-7	87

GLOBAL INTEREST RATES | SELECTED ITEMS

REGION	CURRENT RATE
United States	0,00%-0,25%
United Kingdom	0,50%
European	0,00%
SA Repo Rate	4,00%
SA Prime Rate	7,50%

GLOBAL MARKETS

EUROPEAN INDICES

normalised percentage performances



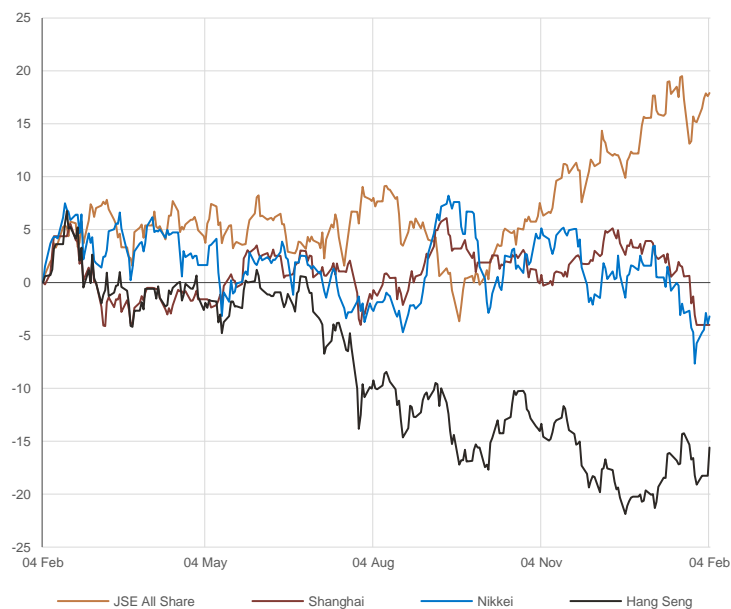
AMERICAN INDICES

normalised percentage performances



ASIAN INDICES

normalised percentage performances



EUROPEAN MARKET COMMENTARY

SELECTED HEADLINES

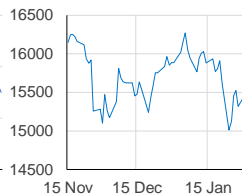
European markets closed in negative territory on Friday as investors digested key updates from both the Bank of England and the European Central Bank the previous day. The pan-European Stoxx 600 provisionally closed 1.42% down, with only the oil and gas sector in positive territory. Autos stocks led losses, shedding 3.34%. New data on Friday revealed that new car sales in the U.K. last month were 23% lower than pre-pandemic levels. Investors are also weighing up fresh economic data out of the continent. Retail sales in the euro zone saw a month-on-month decline of 3% in December, but gained 2% from a year earlier.

EUROPEAN INDICES	CLOSE	PREVIOUS	1D%	5D%	1M%	YTD%
CAC 40	6951,4	7005,6	-0,77	-0,21	-5,00	-2,82
DAX 30	15099,6	15368,5	-1,75	-1,43	-6,52	-4,94
Eurostoxx 50	4126,3	4141,0	-0,36	-1,05	-4,00	-4,00
FTSE	7516,4	7528,8	-0,17	0,67	0,15	1,79

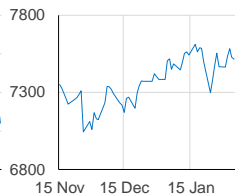
CAC 40



DAX



FTSE



AMERICAN MARKET COMMENTARY

SELECTED HEADLINES

The S&P 500 and Nasdaq Composite jumped Friday to finish their best week of the year, as continued strength in earnings reports extended the tech-led rebound from the January rout. Amazon led the S&P's and Nasdaq's gains, as it jumped 13.5% on strong quarterly earnings and cloud revenue beats. Friday's surge was also Amazon's biggest one-day gain since 2015. The 10-year Treasury yield jumped above 1.9%, hitting its highest level since December 2019, after the January jobs report showed a 467,000 gain in payrolls.

AMERICAN INDICES	CLOSE	PREVIOUS	1D%	5D%	1M%	YTD%
Dow Jones	35089,7	35111,2	-0,06	1,05	-4,65	-3,44
Nasdaq	14098,0	13878,8	1,58	2,38	-9,76	-9,89
S&P 500	4500,5	4477,4	0,52	1,55	-6,11	-5,57

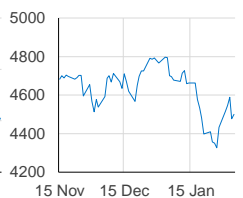
DOW JONES



NASDAQ



S&P 500



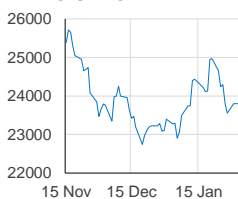
ASIAN MARKET COMMENTARY

SELECTED HEADLINES

Shares in Asia-Pacific were mixed this morning, with mainland China markets reopening following the Lunar New Year holidays last week. In early trade, the Shanghai composite jumped more than 2% while the Hang Seng index, on the other hand, slipped around 0.13%. Investors continued to monitor the situation around Ukraine, with White House national security adviser Jake Sullivan warning Sunday that a Russian invasion could be imminent.

ASIAN INDICES	CLOSE	PREVIOUS	1D%	5D%	1M%	YTD%
Hang Seng	24573,3	23802,3	3,24	4,34	5,51	5,02
Nikkei 225	27440,0	27241,3	0,73	2,70	-6,35	-4,69
Shanghai	3361,4	3361,4	0,00	0,00	-7,46	-7,65

HANG SENG



NIKKEI



SHANGHAI



COMMODITIES

BRENT CRUDE (\$)



PLATINUM (\$)



COMMODITY MARKET COMMENTARY

SELECTED HEADLINES

Gold prices rose this morning, as growing worries over broadening price pressures lifted the metal's appeal as an inflation hedge and helped cushion pressure from higher U.S. Treasury yields after a surprisingly upbeat jobs report. Meanwhile, oil prices rose earlier today, reversing earlier losses, as investors kept bullish sentiment on expectations that global supply would remain tight as demand picks up and shrugged off signs of progress in the U.S.-Iran nuclear talks.

COMMODITY	LAST	CLOSE	% CHG	1D%	1M%	YTD%
Brent Crude (\$)	93,4	93,3	0,14	2,49	16,38	19,67
Gold (\$)	1810,5	1808,3	0,12	0,18	-0,35	-1,15
Palladium	2300,8	2288,5	0,54	-1,72	22,38	20,62
Platinum (\$)	1028,0	1027,5	0,05	-0,87	5,28	6,04
Silver	22,8	22,5	1,18	0,41	-2,33	-3,42

GOLD (\$)



CURRENCIES

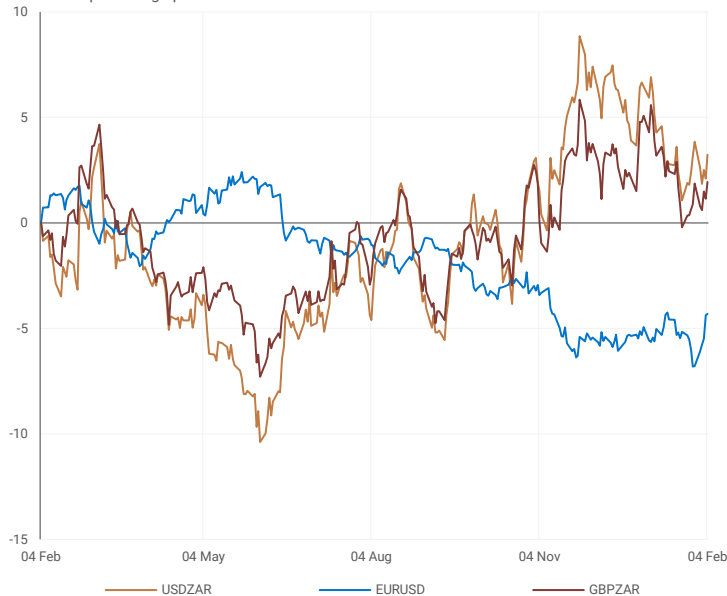
COMMODITY	LAST	CLOSE	% CHG	1D%	1M%	YTD%
USDZAR	15,47	15,46	0,06	1,09	-3,45	-3,03
GBPZAR	20,93	20,91	0,07	0,79	-3,46	-2,99
EURZAR	17,69	17,70	-0,05	1,38	-2,00	-2,39
AUDZAR	10,96	10,94	0,17	0,42	-5,51	-5,59
EURUSD	1,14	1,14	-0,10	0,08	1,43	0,67
USDJPY	115,29	115,20	0,08	0,19	-0,80	0,09
GBPUSD	1,35	1,35	0,03	-0,53	-0,03	-0,02
USDCHF	0,93	0,92	0,06	0,51	0,93	1,36
AUDCAD	0,90	0,90	-0,11	-0,21	-1,84	-1,63

SELECTED HEADLINES

The rand weakened on Friday, eating into the week's gains as the U.S. dollar was bolstered by much better-than-expected jobs numbers. At the close of the session, the rand was trading around R15.46 to the dollar or 1.09% softer. The euro was near Friday's three-week high this morning, after the European Central Bank's hawkish turn last week.

CURRENCY PAIRS

normalised percentage performances



USDZAR



EURUSD

